

CERTIFICATE OF ANALYSIS

Catalog Number: 022900

Product Name: **GLYCOSYLCERAMIDES from wheat**

Chemical Family: Lipid / Ceramide

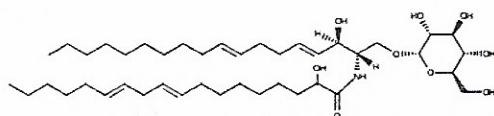
CAS Number: NA

Lot Number: 19053002

Appearance: White to beige colored powder

Storage: Store in a cool, dry and dark place

Assay(HPLC): ≥95% (Mixture of glycosylceramides)



Prepared by:
Ramesh Mandadi
Ramesh Mandadi
Director of Operations

Reviewed and Approved by:
Sujata Moton
Sujata Moton
VP